

TROPOSPHERIC WIND PROFILER RADAR

The system is a Doppler, steerable beam, wind profiler radar, with active solid-state phased array antenna, that reliably provides continuous and real-time vertical profiles of horizontal wind speed and direction, horizontal wind components, and vertical velocity from 150m up to 30km above ground level (agl) in unattended operation. This system can be extended by adding an optional Radio Acoustic Sounding System (BASS).



8 km troposphere wind profiler radar

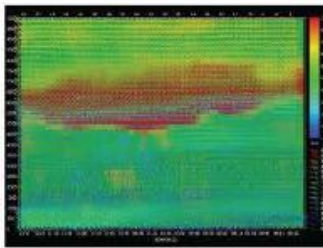
Main technical specifications

8km troposphere wind profiling radar

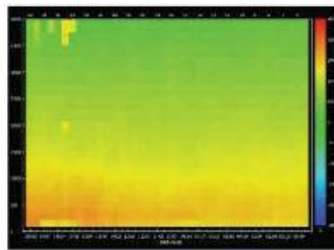
Detection Range	Wind measurement:120m~8km
	Temperature measurement:120m~3km
	Wind direction:0° ~360°
	Wind speed: 0m/s~80m/s
	Vertical air current:+-24m/s
Detection accuracy	Wind direction: ≤ 10°
	Wind speed: ≤1m/s
	Vertical air current: ≤0.25m/s
Resolution	Temperature(Virtual temperature): ≤1℃
	120m (120m~3km) 240m (3km~8km)

16km troposphere wind profiling radar

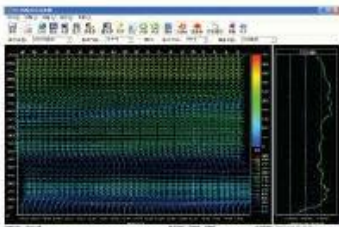
Detection range	Wind measurement:150m~16km
	Temperature measurement:150m~5km
	Wind direction:0° ~360°
	Wind speed: 0m/s~80m/s
Detection accuracy	Vertical air current:+-24m/s
	Wind direction: ≤ 10°
	Wind speed: ≤1m/s
	Vertical air current: ≤0.25m/s
Resolution	Temperature (Virtual temperature): ≤1℃
	75m (150m~3km)
	150m (2.5km~7.5km) 300m (5.5km~16.5km)



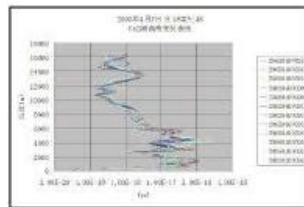
Temperature profile figure



Superposition figure of horizontal wind and vertical wind



Wind profile figure



Cn² figure

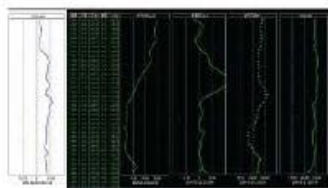


Figure of the products in auxiliary display area



16km troposphere wind profiler radar



16km troposphere wind profiler radar